

LED TEMPORARY HIGHBAY

INSTALLATION INSTRUCTION

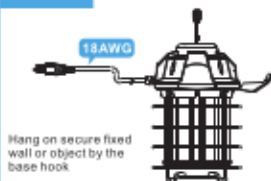
Option:

| Watt | Input | Light effect | Lamp Dimension | Wire Length | Lamp Base | Maximum number of connection lamps | Operating temperature |
|------|--------|--------------|----------------|-------------|-----------|------------------------------------|-----------------------|
| 60W | 120Vac | 100lm/W | 158×158×271mm | 20FT | HOOK | 10PCS | -30℃~+40℃ |
| 100W | 120Vac | 100lm/W | 158×158×306mm | 35FT | HOOK | 6PCS | -30℃~+40℃ |
| 150W | 120Vac | 100lm/W | 158×158×341mm | 50FT | HOOK | 4PCS | -30℃~+40℃ |

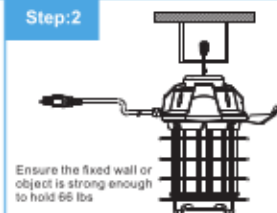


Installation diagram

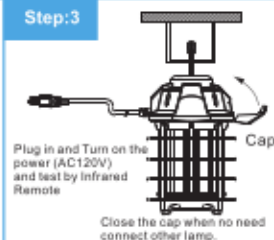
Step:1



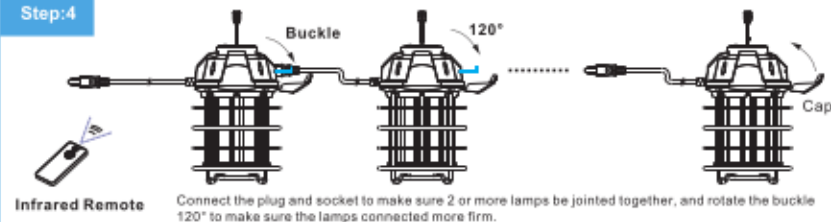
Step:2



Step:3



Step:4



Installation instructions

1. Turn off the power before installation.
2. The installation steps for a single product are as step 1, step 2, step 3.
3. The installation steps for a 2 or more products are as step 1, step 2, step 3, step 4.
4. Close the cap for the last lamp which no need connect other lamps.
5. Turn on the power and test by Infrared Remote

★ Reset fuse in driver in case of overload 5A, thus only the first lamp lighten up, disconnect the extra, the lamps will be lighten up when the fuse cool down, normally it takes 10 seconds.

Warning

1. Please read this manual carefully before use, make sure the application is in accordance with the instructions before use.
2. To reduce the risk of electric shock and fire, do not exceed string maximum wattage including any additional string loads. Maximum number of connection lamps: 60W -10PCS, 100W-6PCS, 150W-4PCS.
3. They are suitable for dry and damp locations
4. Disconnect the power to avoid shock when the equipment is wet.
5. This device is not intended for use with emergency exits.
6. The lamps should be not installed in the heat and sealed environment and corrosive gases, and other places, so as not to affect the service life.
7. Do not override any ignition of explosive materials on the surface, so as not to cause a fire.
8. This luminaire must be installed, tested and maintained by professionals using special equipment.
9. Please check the product carefully after open package, if any products damaged, please keep the packaging and contact to the local dealer.