

Specifications

Item	- 39602A
Model	- LED24T8/5FT/3CCT/R17D/BP
Bulb Type	- LED Type B, Single+Double Ended
Bulb Shape	- T8
Base	- R17D w/ Rotating Ends
Watts	- 24
Input Voltage	- 120-277VAC 50/60Hz
Lumens	- 3300
Kelvin	- 4000-5000-6500 Selectable
CRI	- >80
Beam Angle	- 330° (Double Sided LED Strip)
Dimmable	- No
Average Life Hours	- 50,000
Ambient Operating Temp.	- -4°F ~ 113°F (-20°C ~ 45°C)
Length	- 57.80" (1468mm)
Diameter	- 1.14" (29mm)
Location Rating	- Suitable for Dry/Damp Locations
Enclosed Rated	- Yes



Minimum Lamp Compartment Dimensions 【Length x Width x Height】 【inch】	Lamp Quantity
59.84 x 1.18 x 2.95	1

Caution

- This lamp, as part of a fixture must be wired in accordance with the National Electrical Code (NEC) and applicable local ordinances. Proper grounding is required to ensure personal safety. Carefully observe grounding procedure under the installation section.
- Make certain power is OFF before starting the installation or attempting any maintenance. Risk of fire/electric shock. If not qualified, consult a licensed electrician.
- Disconnect power at fuse or circuit breaker before installing or servicing.
- RISK OF BURN - Disconnect power and allow the lamp to cool before servicing.
- RISK OF PERSONAL INJURY - The lamp may become damaged and/or unstable if not installed properly. Make sure all the lamps and fixture components are securely tightened.

Precaución

- Este accesorio debe estar conectado de acuerdo con el National Código Eléctrico (NEC) y ordenanzas locales aplicables. Apropiado Se requiere conexión a tierra para garantizar la seguridad personal. Cuidadosamente observe el procedimiento de conexión a tierra en la sección de instalación.
- Asegúrese de que la alimentación esté apagada antes de comenzar la instalación o intentando cualquier mantenimiento. Riesgo de incendio / descarga eléctrica. Si no calificado, consulte a un electricista con licencia.
- Desconecte la energía en el fusible o en el interruptor de circuito antes de instalar o servicio.
- RIESGO DE QUEMADURAS: desconecte la alimentación y permita que el dispositivo se enfríe antes de dar servicio
- RIESGO DE LESIONES PERSONALES: el accesorio puede dañarse y / o inestable si no se instala correctamente. Asegúrese de que todos los accesorios. Los componentes están bien apretados.



Caution

WARNING: RISK OF FIRE OR ELECTRIC SHOCK. The electrical rating of this product is 120-277VAC, before installing determine if you have this voltage at the luminaire.

WARNING: RISK OF FIRE OR ELECTRIC SHOCK. LED retrofit kit installation requires knowledge of the luminaire's electrical systems. If you are not qualified, do not attempt installation and contact a qualified electrician.

WARNING: RISK OF FIRE OR ELECTRIC SHOCK. Only install this kit in luminaires that have the construction features and dimensions shown in the photographs, drawings, and where the input rating of the retrofit kit does not exceed the input rating of the luminaire.

Do not make or alter any open holes in an enclosure's wiring or electrical components during installation.

WARNING: To prevent wiring damage or abrasion, do not expose wiring to edges of sheet metal or other sharp objects.

WARNING: To avoid potential fire or shock hazard, do not use this retrofit kit in luminaires employing shunted bi-pin lampholders.

NOTE: Shunted lamp holders are only found in fluorescent luminaires with Instant-Start ballasts. Instant-Start ballasts can be identified by the words "Instant Start" or "I.S" marked on the ballast. This designation may be in the form of a statement pertaining to the ballast itself, or may be combined with the marking for the lamps with which the ballast is intended to be used, for example, F40T12/IS. For more information, contact the manufacturer.

Installers should not disconnect existing wires from lampholder terminals to make new connections at lampholder terminals. Instead installers should cut existing lampholder leads away from the lampholder and make new electrical connections to lampholder lead wires by employing applicable connectors.

THIS RETROFIT KIT IS ACCEPTED AS A COMPONENT OF A LUMINAIRE WHERE THE SUITABILITY OF THE COMBINATION SHALL BE DETERMINED BY AUTHORITIES HAVING JURISDICTION. PRODUCT MUST BE INSTALLED BY A QUALIFIED ELECTRICIAN IN ACCORDANCE WITH THE APPLICABLE AND APPROPRIATE ELECTRICAL CODES. THIS INSTALLATION GUIDE DOES NOT SUPERSEDE LOCAL OR NATIONAL REGULATIONS FOR ELECTRICAL INSTALLATIONS.

Installers should examine all parts that are not intended to be replaced by the retrofit kit for damage and replace any damaged parts prior to installation of the retrofit kit.

DO NOT USE WITH DIMMERS. USE IN DRY OR DAMP LOCATIONS ONLY. THIS DEVICE IS NOT INTENDED FOR USE WITH EMERGENCY EXITS.

Installation Instructions

1. Ensure power is disconnected and/or the circuit breaker is off.
2. Remove existing diffuser (if applicable), fluorescent tube, and open the ballast cover. Dispose of fluorescent tube(s) according to local, state, or federal laws. (www.lamprecycle.org)
3. Disconnect power supply wires L (line) and N (neutral) to the ballast and leads from the ballast to the fluorescent sockets as shown in Figure 1.
4. Connect the 120–277VAC supply to the lampholder's non-shunted socket(s). Connect L (line) to one lead and N (neutral) to the other lead, as shown in Figures 2 or 3.
5. Attach modified luminaire sticker to a visible area near the lamp sockets. Replace the ballast cover, insert LED tube(s), and diffuser (if applicable).
6. Select the color temperature by using the CCT switch on the LED lamp base. Both switches on each end of the lamp must be adjusted to the desired CCT. To prevent damage to lamp, lamp must not be energized when color (CCT) selector switch is changed.
7. Rotate the lamp for your use case.
8. Turn on the power source and check for proper operation.

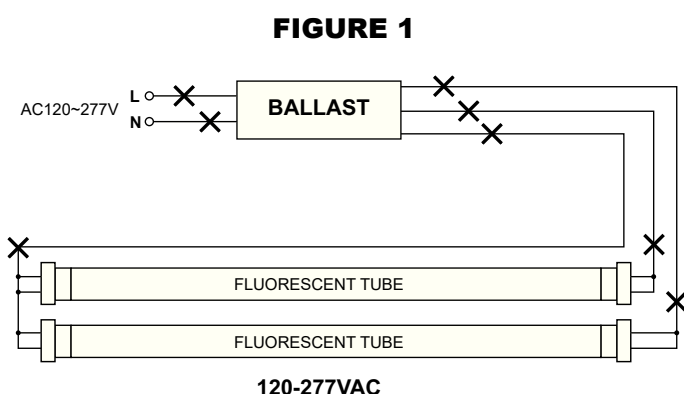


FIGURE 1

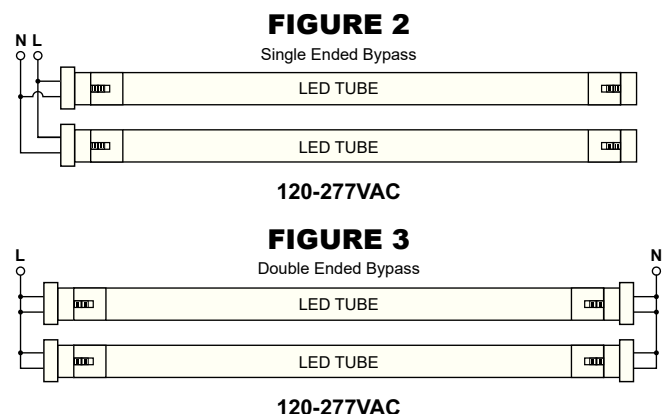


FIGURE 2

Single Ended Bypass

120-277VAC

FIGURE 3

Double Ended Bypass

120-277VAC