

**Smart RGBTW**  
**Slim Gimbal Downlight**  
**User Guide**

#### Introduction:

Thank you for choosing our LED smart light. This user guide will walk you through the simple process of pairing your LED smart light with the Smart Life app for seamless control and customization.

#### SYSTEM REQUIREMENTS

- Minimum iOS 9.3 or Android 4.4
- Dedicated 2.4GHz Wi-Fi network

#### TECHNICAL SUPPORT

[www.damarwww.com](http://www.damarwww.com)

---

#### Step 1: Unboxing and Installation

1. Carefully unbox the LED smart light and ensure all components are present.
2. Install the light following the provided installation instructions.

---

#### Step 2: Smart Life App Installation

1. Download and install the Smart Life app from the App Store (iOS) or Google Play Store (Android). (Note: The app design may change without prior notice.)



Smart Life



Scan here for setup:



2. Open the app and sign in if you already have an account, or create a new account according to the instructions.

---

### Step 3: Power on the Smart Light

1. Install the LED smart light properly.
2. Turn on power to the LED smart light.

#### There are two scenarios:

- A. Light Starts Flashing Automatically: The light is in pairing mode and will blink for 30 seconds. You have 10 minutes to complete setup.
- B. Light Is Not Flashing: Turn the light OFF and ON 5 times with a 2–4 second interval. The light should start flashing to enter pairing mode.

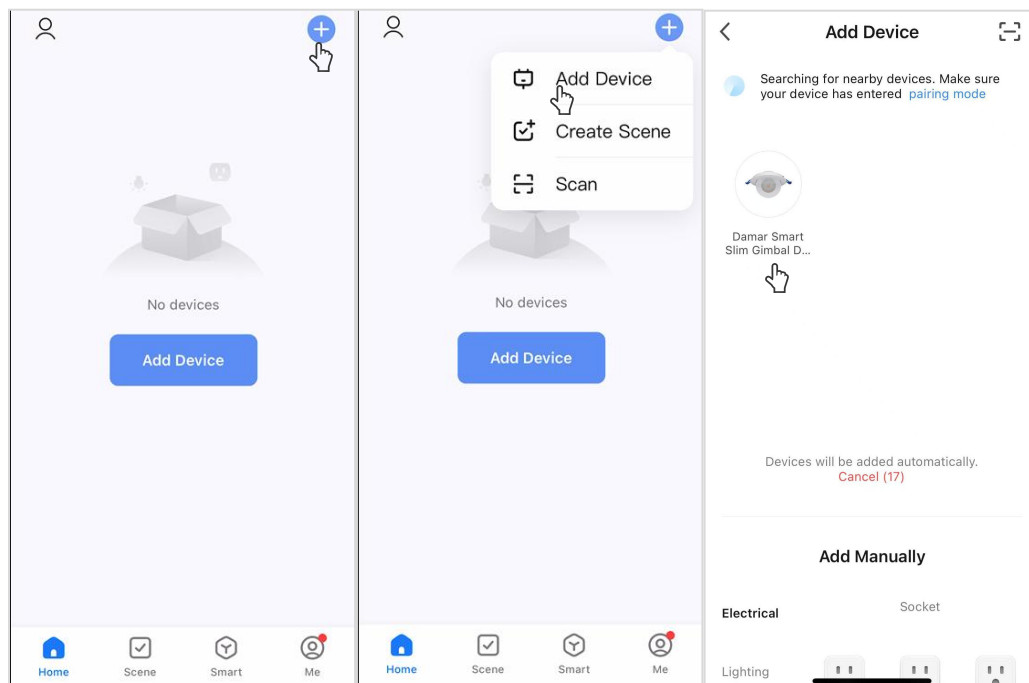
Note: Before adding the device, please verify your mobile device is connected to a 2.4GHz Wi-Fi Network and that you have Bluetooth turned ON for connection.

---

### Step 4: Connect via App

#### Option 1: Auto Discovery

1. Tap the “+” icon in the top right.
2. Tap “Add Device”.
3. You will see a pop-up indicating that there are unpaired devices. Select the devices you would like to connect.



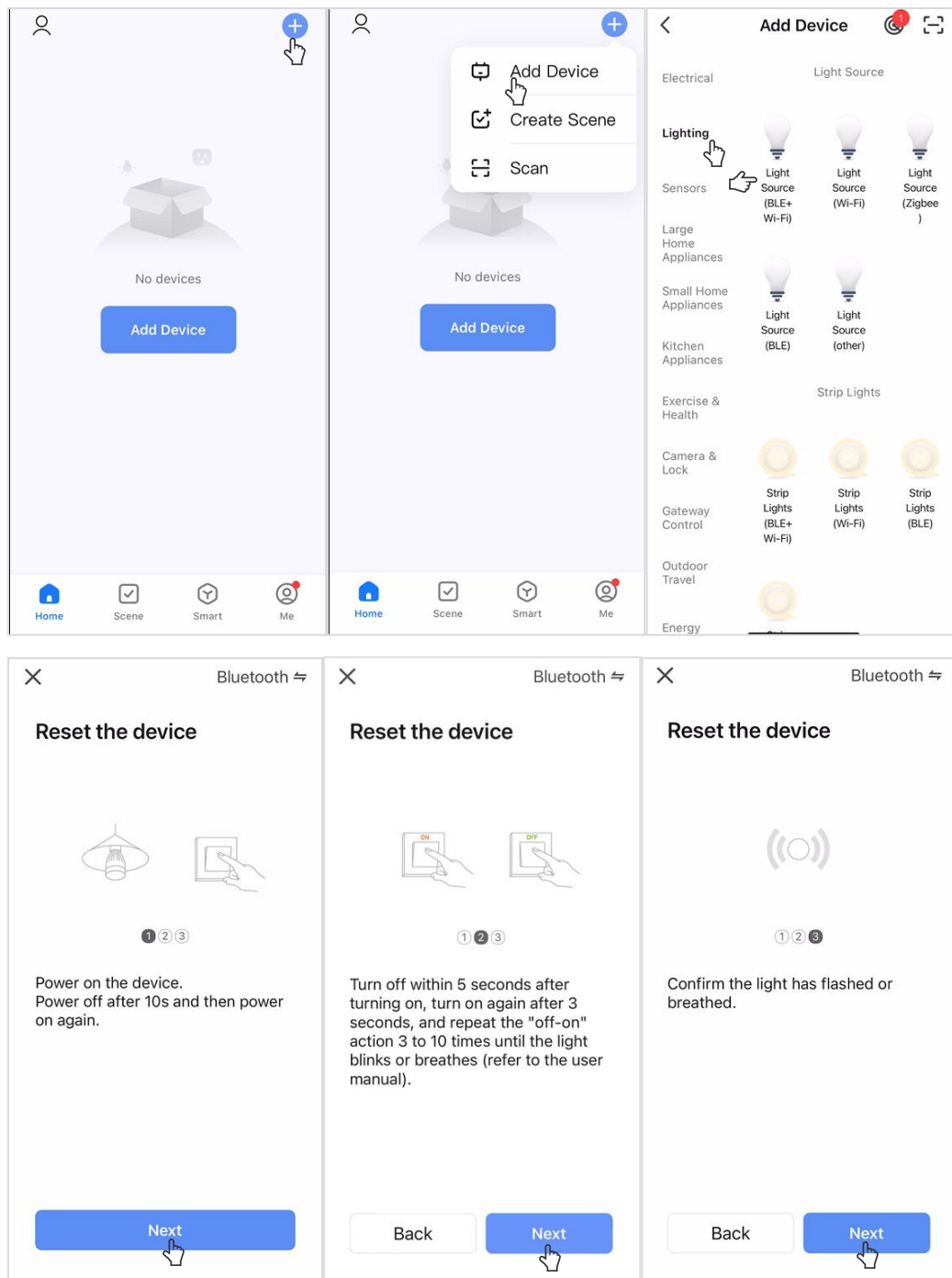
#### Option 2: Manual Add

1. Tap the “+” icon in the top right.
2. Tap “Add Device”.

3. Select: Lighting → Light Source (BLE+Wi-Fi).

If the light is flashing, tab “Next” in the “Reset the device” interface. If not, turn the light OFF and ON 5 times with a 2–4 second interval. The light should start flashing to enter pairing mode.

4. Wait for the app to find the device.



---

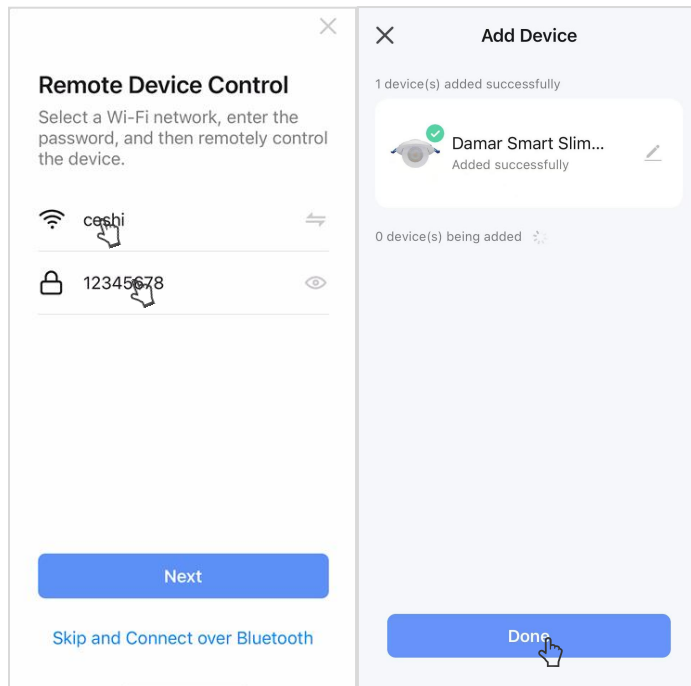
## Step 5: Choose Wi-Fi Network

1. Enter your Wi-Fi network credentials by selecting a Wi-Fi network and entering the password,

then tap "Next". Must be the same 2.4GHz Wi-Fi your phone is using.

2. Wait for the app to discover the light.

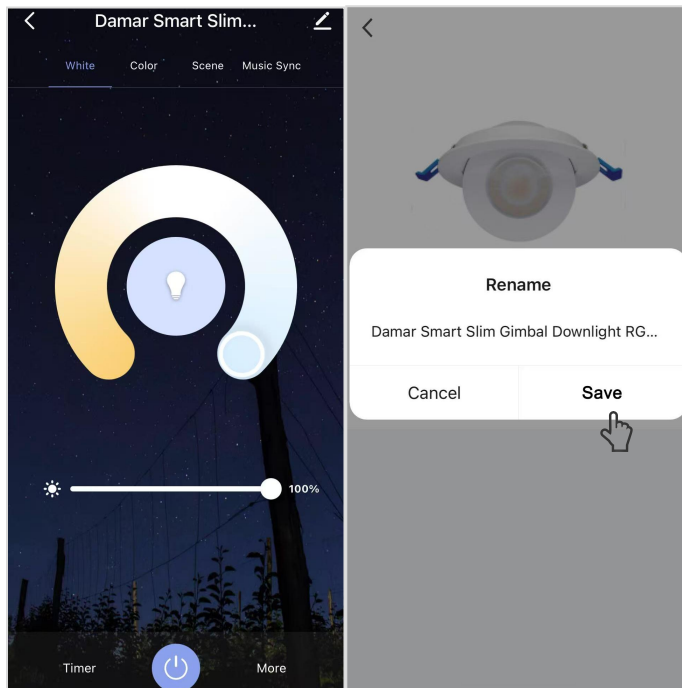
3. Once the light is discovered, confirm the connection by selecting it and tapping "Done".



---

#### Step 6: Device Configuration

1. Rename your device for easy identification. Tap the "Pen" icon, enter the new name and tap "Save".
2. Set up any additional customization options provided by the app (e.g., brightness, color temperature).



---

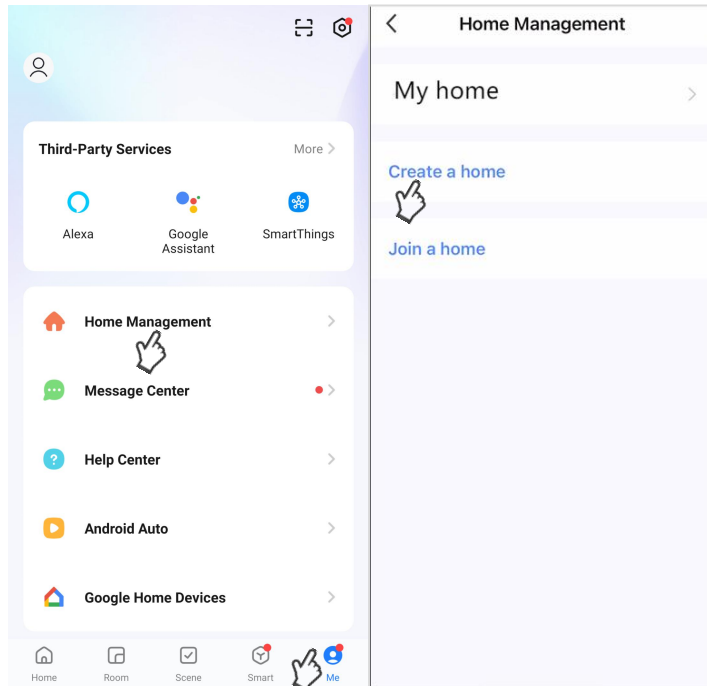
#### Step 7: Completion:

Congratulations! Your LED smart light is now successfully paired with the Smart Life app. You can control and customize your lighting experience through the app's intuitive interface.

---

#### Create a Home:

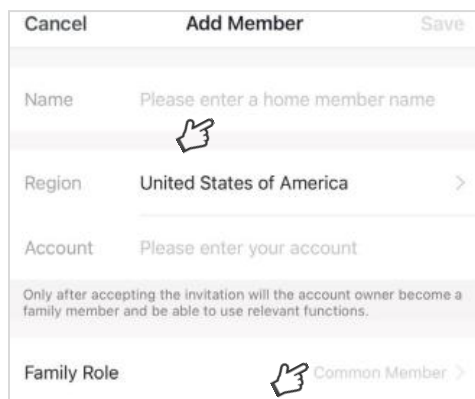
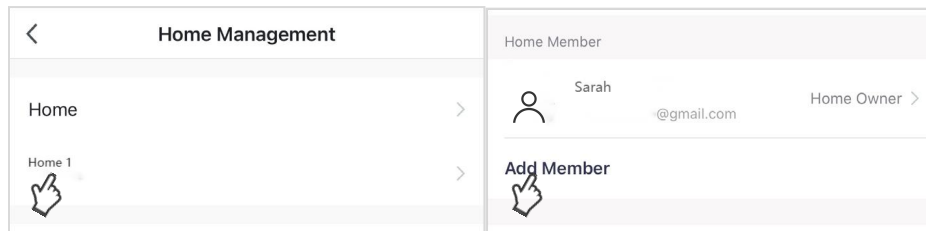
1. Tap the "Me" button at the bottom of the screen, and then "Home Management".
2. Select the "Create a home" button to set up your home.



---

#### Share a Home:

1. From the Home Management screen, select the Home that you would like to share.
2. Tap "Add Member" and select the way that you would like to send the invitation.
3. Enter the user information and select if the new member will be an "Administrator" or a "Common Member" in the Home.
4. Tap "Save" to send the invitation.



---

#### Troubleshooting Tips:

- If the light is not pairing, ensure it is in pairing mode and close to your Wi-Fi router.
- Verify that your Wi-Fi network is stable and functioning properly.

---

#### Support:

If you encounter any issues or have questions, please refer to the product manual or contact our customer support team at [www.damarww.com](http://www.damarww.com).

---

We hope you enjoy the enhanced lighting experience with our LED smart light and the convenience of controlling it through the Smart Life app. Thank you for choosing our product!